

1. Materials: see 3015 note 1.

2. When earth connection device is fitted for use with lead sheath cables the maximum diameter over lead sheath is as per column '02' in the table.

3. STAMPING : All glands to be stamped on the circular band in the following manner:

Stamping Detail

HAWKE 501/453UNIV SIZE / THREAD / ARMOUR RING TYPE / SEAL TYPE / ExII ExTD - 60 + 80°C Baseefa06ATEX0057X A21 IP66 IEC Ex BAS06.0014X OL70NA UK 1180 NEMA4X

e.g. HAWKE 501/453UNIV C / M32 / R / S / ExII ExTD - 60 + 80°C Baseefa06ATEX0057X A21 IP66 IEC Ex BAS06.0014X OL70NA UK 1180 NEMA4X

4. FINISH : This component may be coated or plated to suit the application.

5. OPERATING TEMPERATURE : The standard operating temperature range for this gland is -60°C to + 80°C.

6. SPECIFICATION : In accordance with the relevant requirements of EN60079-0, EN60079-1, EN60079-7, EN 61241-1-1 and IEC60079-0, IEC60079-1, IEC60079-7 and IEC 61241-1-1.

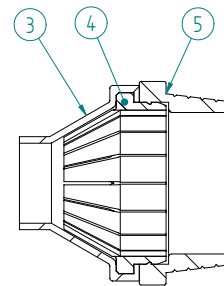
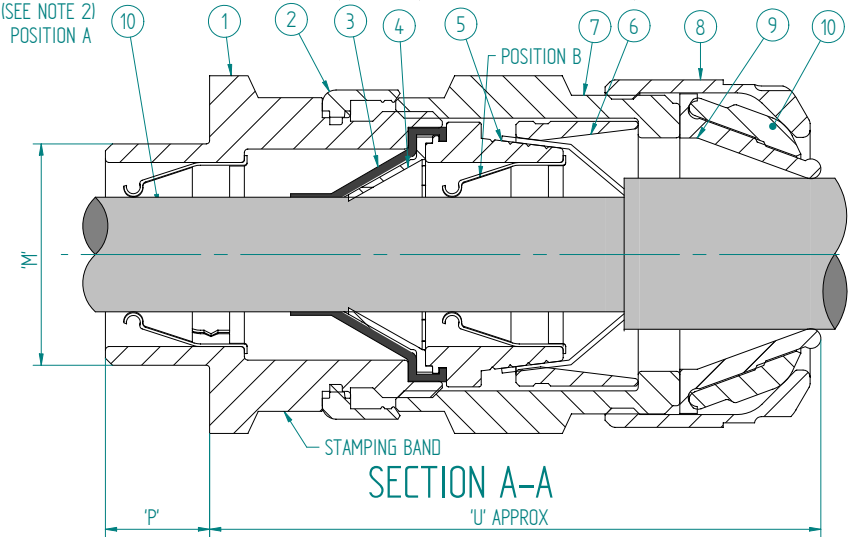
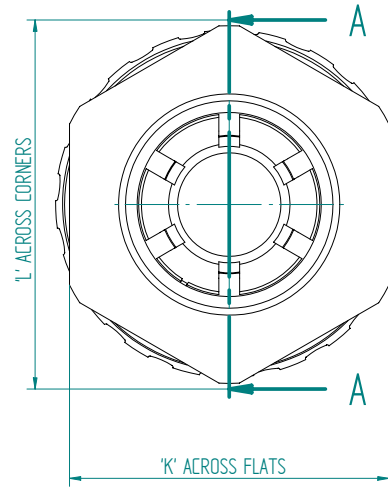
7. CABLE : This gland is suitable for the following Elastomer or plastic insulated cables- single steel wire, single aluminium wire, single and double tape armour, braided and unarmoured.

8. VARIATIONS : Alternative gland body can have larger external dimensions with respect to the male coupling thread that are equal or larger to those shown in the table.

9. An option to use the deluge boot, 3000, is available for improved sealing.

Item No.	Part No.	Description	Qty
1	3060(STD) / 3242(ALT)	Entry	1
2	3000	Deluge seal	
3	3061(STD) / 3241(ALT)	Seal	1
4	3029(STD) / 3240(ALT)	Support washer	1
5	3063(STD) / 3239(ALT)	Spigot	1
6	3041(STD) / 3142(ALT)	Compression ring	1
7	3055	Middle nut	1
8	3034	Back nut	1
9	3035	Back nut seal	1
10	3036	Back nut clamp	1
11	3045 Optional	Continuity ring	1

OPTIONAL EARTHING CONNECTION 3045. 1off to be fitted in position A or B (SEE NOTE 2) POSITION A



ALTERNATIVE SEAL ASSY

SIZE REF.	K'	L'	N' THREAD SIZES Parallel threads are medium fit or better							P' THREAD LENGTHS					CABLE						V' ARMOUR		
			Metric Conduit	Imperial Conduit	Pg	BSPP BSPT	NPT	NPSM	Metric Imperial Pg	BSPP	BSPT	NPT	NPSM	INNER SHEATH		OUTER SHEATH		U'					
														'O1' MAX	'O1' MIN	'O2' MAX DIA. OVER LEAD (SEE NOTE 2) MAX	'O2' MIN		'N' MAX	'N' MIN	(3041 STD)	(3142 Alt (R))	
Os	24.0	27.7	M16 M20	3/4"	13.5 or 11.0	1/2"	1/2"	1/2"	15.0	15.0	18.6	19.9	15.0	8.1	3.0			12.0	5.5	64.4	0-0.7XZ 0.9-1.25W	0.4-0.8XZ 0.8-1.0W	
O	24.0	27.7	M16 M20	3/4"	13.5 or 11.0	1/2"	1/2"	1/2"	15.0	15.0	18.6	19.9	15.0	M 18 10.9 M 20 11.9	6.5	M 18 10.5 M 20 10.5	6.5	16.0	9.5	64.4	0-0.7XZ 0.9-1.25W	0.4-0.8XZ 0.8-1.0W	
A	30.0	34.6	M20	3/4"	16.0	1/2"	1/2"	1/2"	15.0	15.0	18.6	19.9	15.0	14.3	8.4	13.0	8.4	20.5	12.5	65.4	0-0.7XZ 0.9-1.25W	0.4-0.8XZ 0.8-1.0W	
B	36.0	41.6	M25	1"	21.0	1"	1"	1"	15.0	15.0	20.0	20.2	20.0	20.2	11.1	19.0	11.1	26.0	16.9	71.0	0-0.7XZ 1.25-1.6W	0.5-0.9XZ 0.9-1.25W	
C	46.0	53.1	M32	1 1/4"	29.0	1 1/4"	1 1/4"	1 1/4"	15.0	15.0	20.0	23.7	25.0	20.0	26.5	17.6	25.0	17.6	33.0	22.0	76.0	0-0.7XZ 1.6-2.0 W	0.6-1.2XZ 1.2-1.6W
C2	55.0	63.5	M40	1 1/2"	36.0	1 1/2"	1 1/2"	1 1/2"	15.0	15.0	20.0	26.0	25.6	20.0	32.5	23.1	31.2	23.1	41.0	28.0	78.1	0-0.7XZ 1.6-2.0 W	0.6-1.2XZ 1.2-1.6W
D	65.0	75.1	M50	2"	42.0	2"	2"	2"	15.0	15.0	20.0	30.3	26.0	20.0	42.3	28.9	42.3	28.9	52.6	36.0	93.1	0-1.0XZ 1.8-2.5W	1.0-1.45XZ 1.45-1.8W
E	80.0	92.4	M63	2 1/2"		2 1/2"	2"	2 1/2"	15.0	15.0	20.0	33.6	26.9	20.0	54.3	39.9	53.3	39.9	65.3	46.0	99.0	0-1.0XZ 1.8-2.5W	1.0-1.45XZ 1.45-1.8W
F	95.0	109.6	M75	3"		3"	2 1/2"	3"	15.0	15.0	20.0	36.8	39.9	20.0	65.3	50.5	64.3	50.5	78.0	57.0	101.9	0-1.0XZ 1.8-2.5W	1.0-1.45XZ 1.45-1.8W

A3 THIS IS A CAD DRAWING AND MUST BE EDITED AT SOURCE

HAWKE International
OXFORD ST WEST
ASHTON-U-LYNE
OL7 0NA
TEL: +44 (0)161 308 3611

ALL COPYRIGHT RESERVED - HAWKE INTERNATIONAL 2005. THIS DRAWING AND ALL COPYRIGHT THEREIN IS THE PROPERTY OF HAWKE INTERNATIONAL, A DIVISION OF HUBBELL LIMITED. (A member of the Hubbell Group of Companies).

(COPYRIGHT CONDITION: THIS DRAWING SHALL BE USED ONLY FOR THE PURPOSE FOR WHICH IT IS PROVIDED AND NO REPRODUCTION OR PUBLICATION OF THIS DRAWING MAY BE MADE AND NO ARTICLE MAY BE MANUFACTURED OR ASSEMBLED IN ACCORDANCE WITH THIS DRAWING WITHOUT THE PRIOR WRITTEN CONSENT OF THE OWNER.
REMOVE ALL BURRS AND SHARP EDGES USING MINIMUM CHAMFER OR RADIUS. PARTICULARLY REMOVE ALL BURRS FROM START AND FINISH OF THREADS

3RD ANGLE PROJECTION
DO NOT SCALE IF IN DOUBT ASK
GENERAL TOLERANCES
LINEAR ±
ANGULAR ±
UNLESS OTHERWISE STATED

NEW BORDER, DWG FORMAT ALTERED, BOM ADDED, 1180 WAS 0600
Overall lengths reduced
EARTHING CONNECTION POSITION B ADDED
FIRST ISSUE
MODIFICATION

A.O. 26/11/04 HCG 05/013 F
June 02 A.O. ALJ HCG 03/008 C
EH 24/4/02 HCG 02/013 B
A.O. 02/05/01 HCG 01/012 A

DRN BR
CHD A.O.
DATE 02/05/01
UNITS mm

TITLE
GENERAL ARRANGEMENT OF
TYPE 501/453 UNIVERSAL

DRG. No.
501/453 UNIV
SCALE N.T.S. SHEET 1 OF 1